

2026 SPECIALS

www.nationwideab.com.au

Office (03)5592 5461 office@nationwideab.com

Drew Pickford 0428 925 255 drew.nationwide@gmail.com

John Pickford 0428 529 413 john.nationwideab@gmail.com

Ella Clarke 0417 690 773 ella.nationwideab@outlook.com.au



SJK HELIUM

Sexed : \$54.00

IN THE COW Conv : \$25.00

Nasis Code: CBHELIUM

A2/A2

Topstone X Blowtorch X Delta



Jane Steel

Aust Genomic ABV 04/2026

Production			Health Traits		
477 Drts	51 Herds	98%Rel	Survival	106	87%Rel
BPI	672	86%	Sire Still Birth	-2.3	95%Rel
HWI	487	82%	Calv.Ease	101	98%Rel
ASI	404		Cell Count	153	95%Rel
Milk	522		Drt Fert	100	80%Rel
Protein	28	0.27%	Feed Saved	-127	49%Rel
Fat	40	0.26%	L-Weight	105	74%Rel
			Mast.Res	107	88%Rel

Workabilities 00% Rel

Milking Speed	Temperament	Likeability
102	104	107

30 Drts 4 Herds 70% Rel

Overall Type	106	Feet and Legs	110
Mammary System	105	Foot Angle	108
Stature	106	Rear Leg Set	99
Udder Texture	102	Rear Side View	111
Bone Quality	103	Udder Depth	104
Angularity	96	Fore Udder Att	104
Dairy Strength	104	Rear Udder H.	102
Muzzle Width	103	Rear Udder W.	102
Body Depth	98	Centre Ligament	102
Chest Width	105	Front Teat Place	106
Rump		Rear Teat Place	105
Pin Width	99	Loin Strength	100
Pin Set	100	Teat Length	97

USDA Summary 04/2026

1839 Drts	286 Herds	91%Rel
Milk		+467
Prot lbs		+35 +0.07%
Fat lbs		+41 +0.08%
SCC		+2.80
Mast.Res		+2.6
Prod.Life		+2.6
C-Ease		+1.3
Gestation		-2
CCR / DPR		-0.5 / +0.3



Dam: Future Dream H. Primeval 1372 VG 86

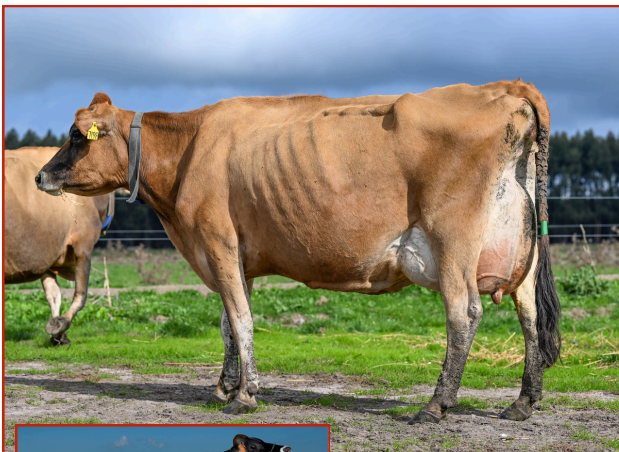
Pinebrook Lord MESSI

IN THE COW Conv : \$22.00

Nasis Code: MESSI

A2/A2

Starlord X David X Navarian



Above Dam : Wallacedale David Melys EX 92
Left Pinebrook Lord Messi

Aust Genomic ABV 04/2026

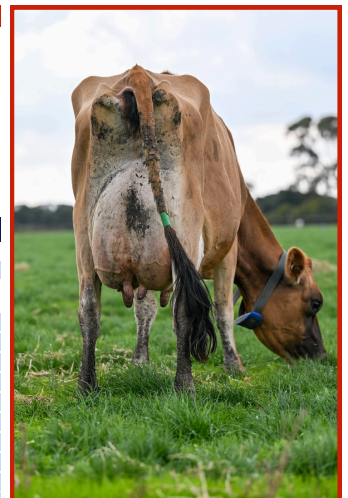
Production			Health Traits		
G Drts	G Herds	77%Rel	Survival	105	60%Rel
BPI	357	69%	Sire Still Birth	0.8	55%Rel
HWI	317	60%	Calv.Ease		
ASI	93		Cell Count	115	67%Rel
Milk	146		Drt Fert	102	60%Rel
Protein	7	0.05%	Feed Saved	31	34%Rel
Fat	9	0.01%	L-Weight	98	64%Rel
			Mast.Res	103	49%Rel

Workabilities 00% Rel

Milking Speed	Temperament	Likeability
103	104	107

30 Drts 4 Herds 70% Rel

Overall Type	106	Feet and Legs	106
Mammary System	111	Foot Angle	108
Stature	99	Rear Leg Set	94
Udder Texture	107	Rear Side View	102
Bone Quality	104	Udder Depth	106
Angularity	103	Fore Udder Att	108
Dairy Strength	99	Rear Udder H.	112
Muzzle Width	100	Rear Udder W.	109
Body Depth	97	Centre Ligament	111
Chest Width	96	Front Teat Place	103
Rump	105	Rear Teat Place	108
Pin Width	100	Loin Strength	106
Pin Set	107	Teat Length	102



Dam: Wallacedale David Melys EX 92

Kings-Ransom **DYNASTY** Conv: \$28.00 Sexed: \$67.00
 Nasis Code: AGRDYNASTY A2/A2 Perfect X Legacy X Helix

No.1 Australian Proven BPI Sire!



Daughters: Tamscott Holsteins

Luke Gardiner

Aust Genomic ABV 04/2026					
Production			Health Traits		
263 Drts	40 Herds	97%Rel	Survival	105	75%Rel
BPI	808	87%	Sire Still Birth	-0.4	95%Rel
HWI	573	82%	Calv.Ease	100	99%Rel
ASI	545		Cell Count	125	91%Rel
Milk	577		Drt Fert	103	77%Rel
Protein	27	0.16%	Feed Saved	-139	58%Rel
Fat	72	0.68%	L-Weight	107	92%Rel
			Mast.Res	105	80%Rel

Workabilities 00% Rel		
Milking Speed	Temperament	Likeability
103	103	107

79 Drts 18 Herds 90% Rel			
Overall Type	109	Feet and Legs	105
Mammary System	111	Foot Angle	102
Stature	108	Rear Leg Set	101
Udder Texture	104	Rear Side View	109
Bone Quality	101	Udder Depth	106
Angularity	103	Fore Udder Att	106
Dairy Strength	106	Rear Udder H.	107
Muzzle Width	104	Rear Udder W.	105
Body Depth	104	Centre Ligament	105
Chest Width	101	Front Teat Place	111
Rump	100	Rear Teat Place	106
Pin Width	109	Loin Strength	103
Pin Set	93	Teat Length	97

USDA Summary 04/2026		
1727 Drts	518 Herds	98%Rel
Milk	+27	
Prot lbs	+16	+0.06%
Fat lbs	+72	+0.27%
SCC	+2.84	
Mast.Res	+1.0	
Prod.Life	+1.4	
C-Ease	+1.6	
Gestation	+0	
CCR / DPR	+2.5 / +1.0	



Daughter: Tamscott Holsteins

Bundalong **MICKYG** Conv: \$20.00
 Nasis Code: MICKYG A2/A2 Dynasty X Conway X Doc

Highest available DYNASTY son on the USA TPI rankings



Bradley Cullen

Aust Genomic ABV 04/2026					
Production			Health Traits		
G Drts	G Herds	79%Rel	Survival	109	62%Rel
BPI	814	68%	Sire Still Birth	-1.4	66%Rel
HWI	594	64%	Calv.Ease	101	70%Rel
ASI	465		Cell Count	134	69%Rel
Milk	159		Drt Fert	103	62%Rel
Protein	17	0.25%	Feed Saved	-135	44%Rel
Fat	60	0.77%	L-Weight	105	66%Rel
			Mast.Res	104	58%Rel

Workabilities 00% Rel		
Milking Speed	Temperament	Likeability
102	101	104

G Drts G Herds 90% Rel			
Overall Type	111	Feet and Legs	104
Mammary System	112	Foot Angle	98
Stature	109	Rear Leg Set	103
Udder Texture	106	Rear Side View	109
Bone Quality	109	Udder Depth	108
Angularity	102	Fore Udder Att	106
Dairy Strength	102	Rear Udder H.	107
Muzzle Width	99	Rear Udder W.	107
Body Depth	99	Centre Ligament	108
Chest Width	96	Front Teat Place	110
Rump	100	Rear Teat Place	104
Pin Width	106	Loin Strength	101
Pin Set	97	Teat Length	95

USDA Summary 04/2026		
G Drts	G Herds	81%Rel
Milk	-380	
Prot lbs	+13	+0.32%
Fat lbs	+68	+0.32%
SCC	+2.81	
Mast.Res	+2.9	
Prod.Life	+3.0	
C-Ease	+1.8	
Gestation	+1	
CCR / DPR	+2.7 / +1.3	



Sire: Kings-Ransom Dynasty

Delta **EVERTON** Conv: \$22.00 Sexed: \$50.00
 Nasis Code: CRVEVERTON A2/A2 E-Profit X Jorben X Metallic



Alex Arlink

Dam: Delta Evelyn

Aust Genomic ABV 04/2026					
Production			Health Traits		
G Drts	G Herds	84%Rel	Survival	109	62%Rel
BPI	529	80%	Sire Still Birth	-1.4	66%Rel
HWI	354	76%	Calv.Ease	101	70%Rel
ASI	320		Cell Count	134	69%Rel
Milk	177		Drt Fert	103	62%Rel
Protein	21	0.31%	Feed Saved	-135	44%Rel
Fat	30	0.32%	L-Weight	105	66%Rel
			Mast.Res	104	58%Rel

Workabilities 00% Rel		
Milking Speed	Temperament	Likeability
102	101	100

G Drts G Herds 90% Rel			
Overall Type	107	Feet and Legs	104
Mammary System	109	Foot Angle	100
Stature	97	Rear Leg Set	101
Udder Texture	100	Rear Side View	103
Bone Quality	103	Udder Depth	107
Angularity	99	Fore Udder Att	105
Dairy Strength	100	Rear Udder H.	109
Muzzle Width	103	Rear Udder W.	100
Body Depth	99	Centre Ligament	110
Chest Width	101	Front Teat Place	105
Rump	101	Rear Teat Place	109
Pin Width	102	Loin Strength	104
Pin Set	102	Teat Length	102

USDA Summary 04/2026		
7247 Drts	2011 Herds	94%Rel
Milk	-213	
Prot lbs	+22	+0.11%
Fat lbs	+23	+0.12%
SCC	+2.99	
Mast.Res	+1.8	
Prod.Life	+1.2	
C-Ease	+1.3	
Gestation	+2	
CCR / DPR	+0.2 / +0.5	



MGD: Sientje 62 2015