

SEMEX

B

2025 **ANGUS** CATALOGUE





MAKE YOUR NEXT GENERATION YOUR BEST GENERATION.

Producers wanting to propel their genetics are using advanced reproductive technologies and IVF.
No one has better, more consistent results than Boviteq.

WHAT OTHERS DON'T TELL YOU

YOU CAN DO BETTER THAN 4-5 EMBRYOS/DONOR
WHEN YOU DON'T STIMULATE DONORS, YOU DON'T
GET THE SAME RESULTS
FRESH AND FROZEN EMBRYOS CAN GIVE SIMILAR RESULTS
YOU'RE ON YOUR OWN IDENTIFYING DONORS & RECIPIENTS

YOUR YOUNGEST ANIMALS CAN BE YOUR MOST
PRODUCTIVE DONORS
THEY DON'T TREAT DONORS/SIRES INDIVIDUALLY
YOU WON'T GET THE RESULT FEEDBACK YOU NEED

BOVITEQ[®]
GIVES YOU

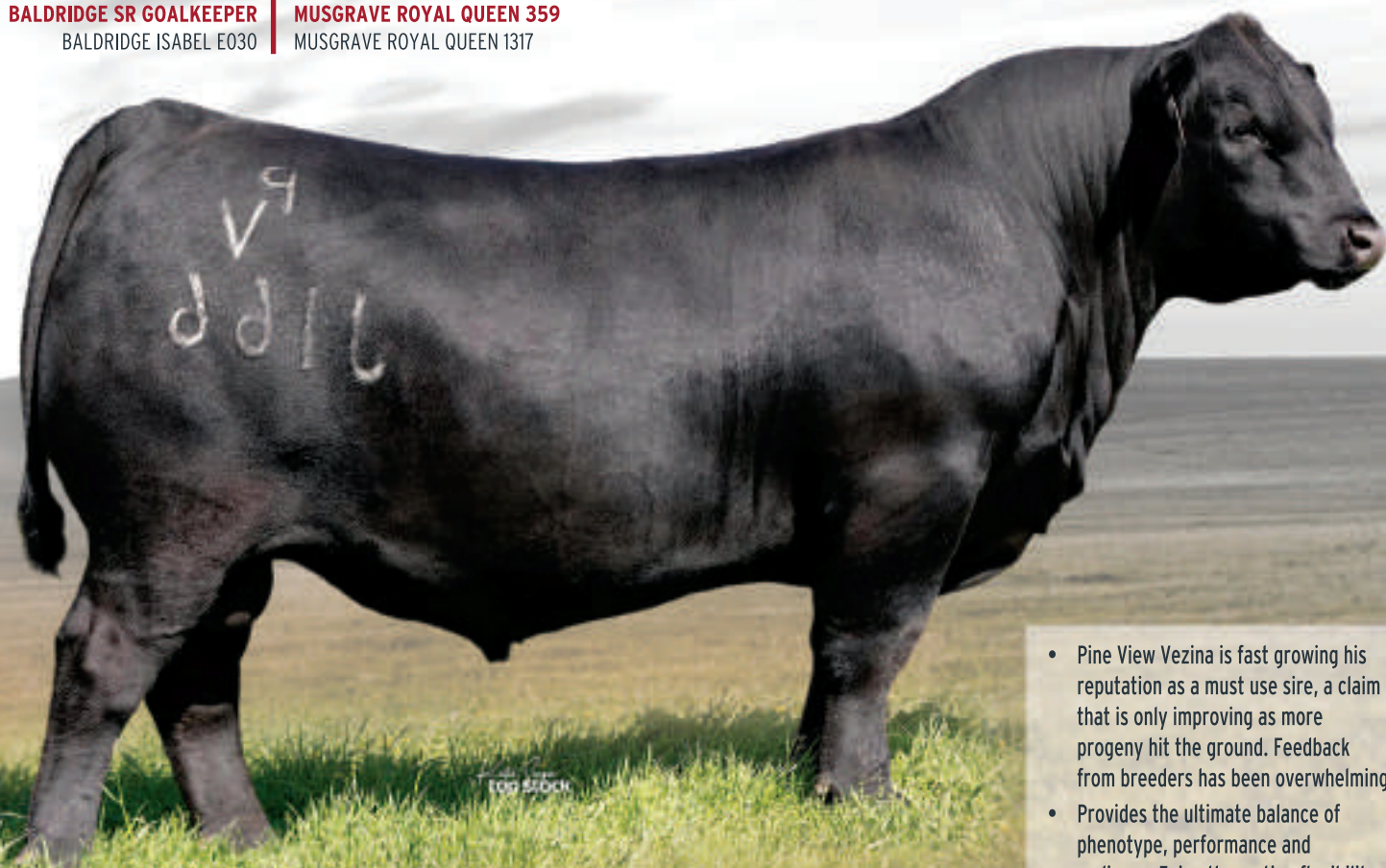
- The most embryos/donor
- Industry's highest frozen embryo conception rates
- Customized donor/sire solutions
- Experts give timely feedback that matters
- Our latest R&D to give you the best results
- The Semex Team helps you identify donors/recipients, simplifies genomics, and makes sure you raise the right heifers

Boviteq[®]
INNOVATIVE IVF SOLUTIONS

PINE VIEW VEZINA J166

0200AN10468 | Reg # 20104591 | BD: Dec 26, 2020 | Frame: - | BW: 74 lbs | WW: 744 lbs | YW: 1168 lbs | Scrotal: 39.26 cm

SYDGEN ENHANCE | CONNEALY MAINSTAY
BALDRIDGE SR GOALKEEPER | MUSGRAVE ROYAL QUEEN 359
BALDRIDGE ISABEL E030 | MUSGRAVE ROYAL QUEEN 1317



- Pine View Vezina is fast growing his reputation as a must use sire, a claim that is only improving as more progeny hit the ground. Feedback from breeders has been overwhelming
- Provides the ultimate balance of phenotype, performance and pedigree. Enjoy the mating flexibility he offers for both heifer and mature cow programs whilst adding serious value to progeny
- Hard to go past the combination of calving ease, growth and carcass Vezina puts together in a sound and attractive package

MID MAR. 2025	CE DIR %	CE DTRS %	GEST LENGTH (DAYS)	BIRTH WT (KG)	200 DAY WT (KG)	400 DAY WT (KG)	600 DAY WT (KG)	MAT COW WT (KG)	MAT. BODY CONDITION	MAT. COW HEIGHT	MILK KG	DAYS TO CALVING	SCROTAL SIZE
EBV	+7.9	+4.4	-5.3	+3.2	+68	+119	+153	+124	+0.20	+7.7	+23	-2.9	+2.4
ACC	78%	58%	97%	96%	92%	87%	86%	83%	69%	73%	79%	41%	81%
PERC	9	41	38	33	3	4	5	20	68	60	12	88	40

MID MAR. 2025	DOCILITY	CARCASS WEIGHT	EYE MUSCLE AREA	RIB FAT	RUMP FAT	RETAIL BEEF YIELD	IMF	NFI-F	CLAW SET	FOOT ANGLE	LEG ANGLE	ANGUS BREEDING INDEX	ANGUS BREEDING LOW FEED COST INDEX
EBV	+36	+89	+12.2	+0.4	-0.3	+0.4	+2.7	+0.03	+0.88	+0.82	+0.76	\$258	\$434
ACC	77%	78%	75%	72%	71%	65%	77%	60%	72%	72%	66%	-	-
PERC	8	7	6	41	51	47	42	29	58	18	3	7	5



Sire - BALDRIDGE SR GOALKEEPER



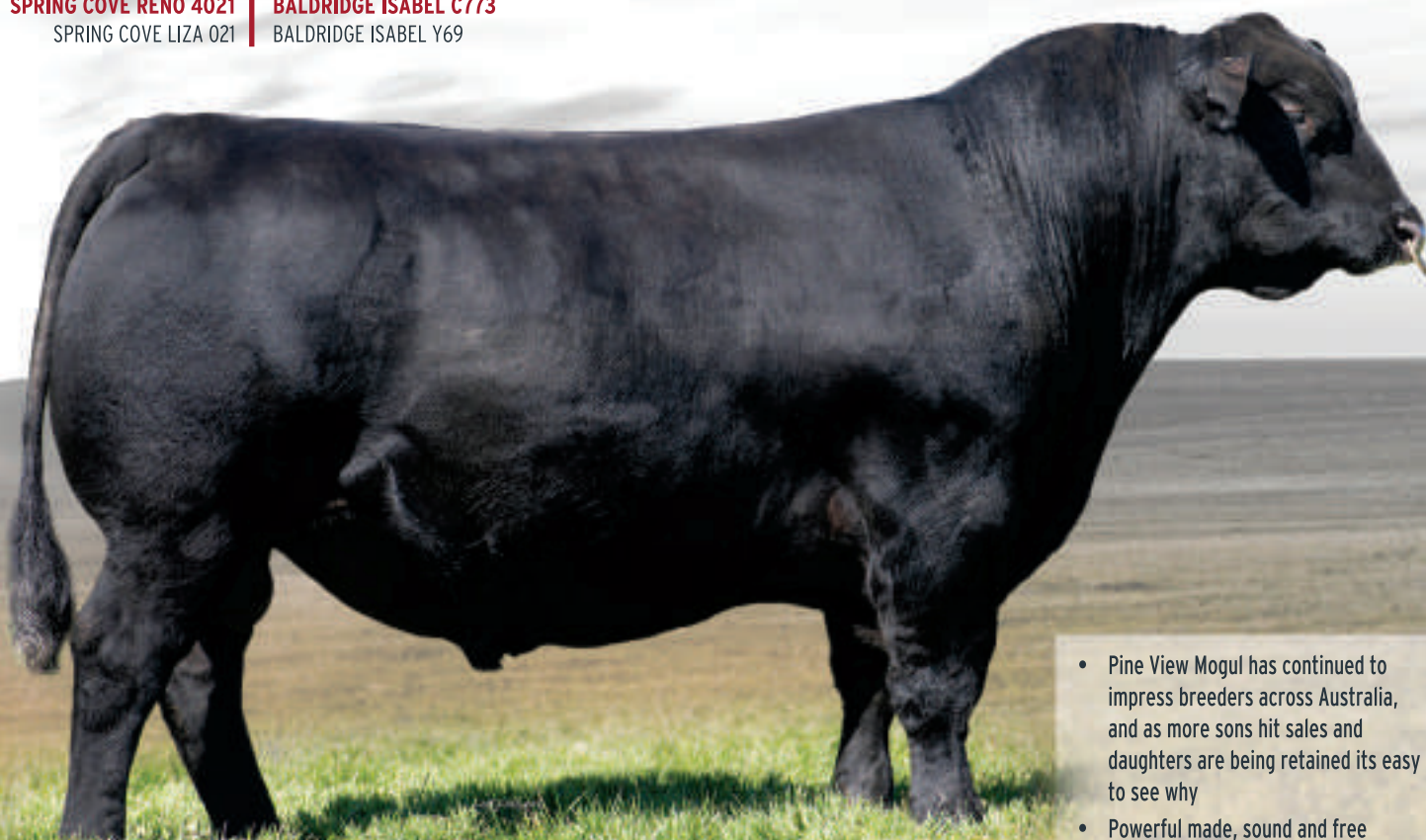
Dam - MUSGRAVE ROYAL QUEEN 359 as a heifer in 2020

PINE VIEW MOGUL G241

0200AN10840 | Reg # 19502726 | BD: Jan 28, 2019 | Frame: - | BW: 65 lbs | WW: 649 lbs | YW: - | Scrotal: 39.0 cm

KM BROKEN BOW 002
SPRING COVE RENO 4021
 SPRING COVE LIZA 021

BALDRIDGE XPAND X743
BALDRIDGE ISABEL C773
 BALDRIDGE ISABEL Y69



- Pine View Mogul has continued to impress breeders across Australia, and as more sons hit sales and daughters are being retained its easy to see why
- Powerful made, sound and free moving on great feet and legs would best describe his sons who have been making their mark over the past 12 months in sales right across Australia. His daughters have also been well complimented, providing some great opportunities for those keeping replacements for the future. An exciting prospect!
- Be sure to add Mogul to your bull list for 2025 and join many other breeders in his success

MID MAR. 2025	CE DIR %	CE DTRS %	GEST LENGTH (DAYS)	BIRTH WT (KG)	200 DAY WT (KG)	400 DAY WT (KG)	600 DAY WT (KG)	MAT COW WT (KG)	MAT. BODY CONDITION	MAT. COW HEIGHT	MILK KG	DAYS TO CALVING	SCROTAL SIZE
EBV	+5.9	+9.8	-2.7	+4.2	+68	+124	+149	+101	+0.13	+6.4	+26	-3.8	+1.2
ACC	80%	58%	98%	98%	97%	97%	95%	88%	66%	68%	80%	48%	95%
PERC	22	2	78	57	3	2	7	52	83	82	6	73	82

MID MAR. 2025	DOCILITY	CARCASS WEIGHT	EYE MUSCLE AREA	RIB FAT	RUMP FAT	RETAIL BEEF YIELD	IMF	NFI-F	CLAW SET	FOOT ANGLE	LEG ANGLE	ANGUS BREEDING INDEX	ANGUS BREEDING LOW FEED COST INDEX
EBV	+11	+87	+14.0	-3.7	-3.1	+1.5	+1.4	-0.93	+0.46	+0.68	+0.90	\$292	\$461
ACC	94%	83%	84%	82%	81%	75%	84%	64%	94%	94%	90%	-	-
PERC	87	10	2	99	90	5	74	1	2	4	16	1	1



Mogul Progeny - Wrigley Cattle Co



Mogul Progeny - Wrigley Cattle Co

LVVF TANKER 14

0200AN10804 | Reg # 20132190 | BD: Jan 7, 2021 | Frame: - | BW: 84 lbs | WW: 842 lbs | YW: 1592 lbs | Scrotal: 42.5 cm

KM BROKEN BOW 002 | V A R LEGEND 5019
CASINO BOMBER N33 | LVVF LEGEND 842
CASINO ANNIE K48 | LVVF BULLSEYE 1154



MID MAR. 2025	CE DIR %	CE DTRS %	GEST LENGTH (DAYS)	BIRTH WT (KG)	200 DAY WT (KG)	400 DAY WT (KG)	600 DAY WT (KG)	MAT COW WT (KG)	MAT. BODY CONDITION	MAT. COW HEIGHT	MILK KG	DAYS TO CALVING	SCROTAL SIZE
EBV	+4.3	+2.5	-8.0	+2.7	+78	+136	+169	+140	+0.35	+7.5	+19	-2.5	+3.2
ACC	71%	54%	96%	95%	92%	88%	86%	83%	64%	66%	79%	40%	80%
PERC	37	61	9	24	1	1	1	8	27	64	33	92	17

MID MAR. 2025	DOCILITY	CARCASS WEIGHT	EYE MUSCLE AREA	RIB FAT	RUMP FAT	RETAIL BEEF YIELD	IMF	NFI-F	CLAW SET	FOOT ANGLE	LEG ANGLE	ANGUS BREEDING INDEX	ANGUS BREEDING LOW FEED COST INDEX
EBV	+31	+106	+11.0	-3.4	-7.5	+1.1	+2.4	+0.14	+0.72	+0.74	+0.84	\$263	\$448
ACC	84%	80%	75%	73%	71%	64%	78%	60%	72%	71%	59%	-	-
PERC	15	1	10	98	99	13	49	40	25	8	8	5	3

- 2024 was a huge year for LVVF Tanker, 2025 will see that trend continue. We were inundated with enquiries on this bull!
- Tanker has the phenotype and mass that appeals to those seeking those real eye catching bulls that the serious cattlemen like to look at. Tankers' early progeny certainly has delivered on this potential! His calves have been thick, stylish and sound with a bombproof temperament. Breeders have also gone to him as the bull to fix feet!
- Tanker whilst being that big imposing type sire, doesn't come at the expense of high Birth, or high MCW. So breeders can add power and performance without the risk! Will be a hard bull to pass by in 2025!

KOOJAN HILLS TRADESMAN T306

SBTRADESMAN | Reg # WKH22T306 | BD: Apr 18, 2022 | Frame: 6.3 | BW: 36 kgs | WW: 385 kgs | YW: - | Scrotal: 44 cm

SITZ STELLAR 726D | SYDGEN ENHANCE
SITZ RESILIENT 10208 | KOOJAN HILLS R43
SITZ MISS BURGESS 1856 | KOOJAN HILLS M10



TRADESMAN FOOT

MID MAR. 2025	CE DIR %	CE DTRS %	GEST LENGTH (DAYS)	BIRTH WT (KG)	200 DAY WT (KG)	400 DAY WT (KG)	600 DAY WT (KG)	MAT COW WT (KG)	MAT. BODY CONDITION	MAT. COW HEIGHT	MILK KG	DAYS TO CALVING	SCROTAL SIZE
EBV	+5.9	+3.3	-8.1	+2.8	+66	+116	+150	+129	+0.22	+6.6	+18	-9.0	+2.2
ACC	74%	60%	93%	92%	86%	83%	84%	81%	68%	70%	75%	43%	80%
PERC	22	53	8	26	5	6	6	15	62	78	41	1	48

MID MAR. 2025	DOCILITY	CARCASS WEIGHT	EYE MUSCLE AREA	RIB FAT	RUMP FAT	RETAIL BEEF YIELD	IMF	NFI-F	CLAW SET	FOOT ANGLE	LEG ANGLE	ANGUS BREEDING INDEX	ANGUS BREEDING LOW FEED COST INDEX
EBV	+26	+90	+11.3	+1.6	+0.2	+0.5	+1.7	+0.01	+0.68	+0.96	+0.84	\$290	\$489
ACC	78%	73%	71%	71%	71%	63%	75%	61%	70%	70%	66%	-	-
PERC	30	6	9	18	42	41	67	27	19	49	8	1	1

- Koojan Hills Tradesman is certainly an exciting prospect for 2025!
- The first crop of calves hit the ground in 2024 and didn't disappoint, locking himself in as a flexible mating option, capable of both heifer and cow duties
- Tradesman as his name implies, offers a tool box of desirable traits. Combines the great birth and growth spread, positive fats and a great EMA. Expect him to continue building into a great option as more progeny come online

QUAKER HILL REGENERON 0U35

0200AN10488 | Reg # 19991655 | BD: Sept 27, 2020 | Frame: - | BW: 73 lbs | WW: 738 lbs | YW: - | Scrotal: -

K C F BENNETT CONSENT Y75
K C F BENNETT SUMMATION
THOMAS PATRICIA 9705

MILL BRAE PROTOCOL 1013
QUAKER HILL KIMBERLY 4X53
HF KIMBERLY 6204



Sire - K C F BENNETT SUMMATION

MID MAR. 2025	CE DIR %	CE DTRS %	GEST LENGTH (DAYS)	BIRTH WT (KG)	200 DAY WT (KG)	400 DAY WT (KG)	600 DAY WT (KG)	MAT COW WT (KG)	MAT. BODY CONDITION	MAT. COW HEIGHT	MILK KG	DAYS TO CALVING	SCROTAL SIZE
EBV	+4.7	+2.9	-4.3	+4.3	+68	+121	+151	+110	+0.20	+5.0	+20	-5.0	+1.4
ACC	61%	52%	81%	84%	85%	84%	83%	80%	65%	67%	78%	39%	80%
PERC	33	57	54	59	3	3	5	37	68	94	26	45	77

MID MAR. 2025	DOCILITY	CARCASS WEIGHT	EYE MUSCLE AREA	RIB FAT	RUMP FAT	RETAIL BEEF YIELD	IMF	NFI-F	CLAW SET	FOOT ANGLE	LEG ANGLE	ANGUS BREEDING INDEX	ANGUS BREEDING LOW FEED COST INDEX
EBV	+19	+94	+12.3	-2.4	-3.4	+1.0	+2.7	+0.34	+0.80	+0.88	+0.90	\$287	\$457
ACC	73%	76%	74%	71%	70%	63%	77%	60%	70%	70%	53%	-	-
PERC	59	4	5	92	92	16	42	62	41	30	16	1	2

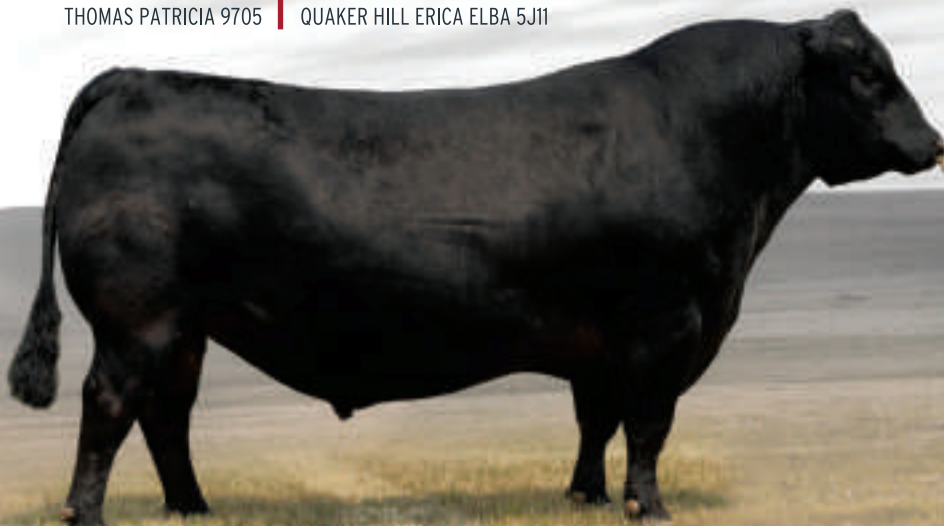
- New for 2025! Regeron offers something a little different for breeders here in Australia
- Sired by the powerful KCF Bennett Summation, Regeron offers a tremendous spread from birth to high growth with EMA and CWT
- Indexs right at the pointy end of the breed!

QUAKER HILL HIGH COTTON 9U17

0200AN10384 | Reg # 19735380 | BD: Sept 16, 2019 | Frame: - | BW: 71 lbs | WW: - | YW: - | Scrotal: 39.5 cm

K C F BENNETT CONSENT Y75
K C F BENNETT SUMMATION
THOMAS PATRICIA 9705

R B TOUR OF DUTY 177
QUAKER HILL ERICA ELBA 5Y01
QUAKER HILL ERICA ELBA 5J11



Sire - K C F BENNETT SUMMATION

MGS - R B TOUR OF DUTY 177



MID MAR. 2025	CE DIR %	CE DTRS %	GEST LENGTH (DAYS)	BIRTH WT (KG)	200 DAY WT (KG)	400 DAY WT (KG)	600 DAY WT (KG)	MAT COW WT (KG)	MAT. BODY CONDITION	MAT. COW HEIGHT	MILK KG	DAYS TO CALVING	SCROTAL SIZE
EBV	+5.8	+1.1	-3.7	+2.6	+62	+118	+150	+137	+0.39	+4.2	+19	-4.9	+1.0
ACC	64%	55%	82%	85%	86%	84%	84%	81%	66%	68%	79%	42%	81%
PERC	23	74	64	22	11	4	6	9	20	97	36	47	87

MID MAR. 2025	DOCILITY	CARCASS WEIGHT	EYE MUSCLE AREA	RIB FAT	RUMP FAT	RETAIL BEEF YIELD	IMF	NFI-F	CLAW SET	FOOT ANGLE	LEG ANGLE	ANGUS BREEDING INDEX	ANGUS BREEDING LOW FEED COST INDEX
EBV	+17	+94	+8.9	+0.1	+0.4	+0.7	+1.8	+0.42	+0.66	+0.78	+0.98	\$248	\$435
ACC	74%	76%	75%	72%	72%	65%	78%	62%	70%	70%	53%	-	-
PERC	69	4	23	48	38	29	64	70	16	12	36	11	4

- Quaker Hill High Cotton, a quality KCF Bennett Summation son who provides a classy calving ease option for 2025
- Has the birth to growth spread that appeals, with the EMA and fats to complete the package
- An impressive phenotype showing that extra length and dimension with solid feet make him the ideal option for any commercial heifer programs seeking something new this year
- Available in Sexed female for those seeking to breed heifers to put into a rising market later this year or early next year!

RIVERBEND UPGRADE 8605

0200AN10376 | Reg # 19400049 | BD: Oct 11, 2018 | Frame: 6.2 | BW: 74 lbs | WW: 669 lbs | YW: 1163 lbs | Scrotal: 37.0 cm

V A R DISCOVERY 2240
DIABLO DELUXE 1104
DIABLO ERICA DIANNA 9034

PLATTEMERE WEIGH UP K360
BLACK GOLD RITA 527
GAR/DRMCTR OBJECTIVE 9J86



DAM- BLACK
GOLD RITA 527



Upgrade
Progeny:
CLAREMONT
ANGUS

MID MAR. 2025	CE DIR %	CE DTRS %	GEST LENGTH (DAYS)	BIRTH WT (KG)	200 DAY WT (KG)	400 DAY WT (KG)	600 DAY WT (KG)	MAT COW WT (KG)	MAT. BODY CONDITION	MAT. COW HEIGHT	MILK KG	DAYS TO CALVING	SCROTAL SIZE
EBV	6.8	+5.9	-4.7	+5.4	+79	+141	+171	+169	+0.36	+8.9	+16	-1.9	+2.5
ACC	75%	62%	95%	94%	93%	92%	92%	87%	72%	75%	83%	48%	89%
PERC	96	25	47	81	1	1	1	1	25	36	64	96	37

MID MAR. 2025	DOCILITY	CARCASE WEIGHT	EYE MUSCLE AREA	RIB FAT	RUMP FAT	RETAIL BEEF YIELD	IMF	NFI-F	CLAW SET	FOOT ANGLE	LEG ANGLE	ANGUS BREEDING INDEX	ANGUS BREEDING LOW FEED COST INDEX
EBV	+13	+105	+4.8	-3.0	-5.9	+0.1	+2.9	+0.44	+0.82	+0.92	+1.08	\$211	\$394
ACC	86%	83%	80%	80%	78%	72%	82%	65%	78%	78%	68%	-	-
PERC	81	1	70	96	99	65	37	72	45	39	68	47	21

- Riverbend Upgrade offers something a little different for breeders here in Australia. His first sons sold in the South in 2024 and impressed those who inspected them. His daughters have also now calved down, no worries and no fuss
- Upgrade is adding frame and length, with the daughters wide hiped and broody
- For those seeking a bull with the ability to add some serious weight and growth in a sound package, Upgrade will be your bull

MONTANA ELEVATION 7108

0200AN10742 | Reg # 18844589 | BD: July 1, 2017 | Frame: 5.6 yrl | BW: 74 lbs | WW: 734 lbs | YW: 1291 lbs | Scrotal: 40.0 cm

BALDRIDGE XPAND X743
BALDRIDGE COLONEL C251
BALDRIDGE ISABEL Y69

DEER VALLEY ALL IN
MONTANA BLACKCAP C038
RITA 12H9 OF 9067 RITO 5M2



Elevation son:
BULL OAK WELL
ELEVATION 537
Top price bull \$27,000
at Bull Oak Well Angus
Bull Sale



Elevation
Progeny:
BULL OAK
WELL ANGUS

MID MAR. 2025	CE DIR %	CE DTRS %	GEST LENGTH (DAYS)	BIRTH WT (KG)	200 DAY WT (KG)	400 DAY WT (KG)	600 DAY WT (KG)	MAT COW WT (KG)	MAT. BODY CONDITION	MAT. COW HEIGHT	MILK KG	DAYS TO CALVING	SCROTAL SIZE
EBV	+0.3	+5.7	-7.8	+4.5	+69	+123	+154	+118	+0.26	+7.6	+27	-3.9	+2.6
ACC	81%	67%	98%	97%	96%	96%	95%	92%	74%	81%	88%	50%	93%
PERC	71	27	10	64	3	2	4	27	51	61	3	71	33

MID MAR. 2025	DOCILITY	CARCASE WEIGHT	EYE MUSCLE AREA	RIB FAT	RUMP FAT	RETAIL BEEF YIELD	IMF	NFI-F	CLAW SET	FOOT ANGLE	LEG ANGLE	ANGUS BREEDING INDEX	ANGUS BREEDING LOW FEED COST INDEX
EBV	+33	+87	+10.2	-0.6	-1.4	+0.3	+1.8	-0.06	+0.86	+0.72	+0.78	\$252	\$417
ACC	89%	86%	84%	83%	82%	76%	84%	66%	84%	84%	75%	-	-
PERC	12	9	14	64	70	53	64	21	54	6	4	9	9

- Montana Elevation continues to leave his mark with bulls continuing to sell and daughters well and truly into production now and doing a good job
- Use Elevation to add EMA, Carcase Weight, Docility and Scrotal!
- Elevations classy pedigree reinforces why he is delivering the goods so consistently and now with a large number of progeny, he is one of the most reliable choices on the market

PEAK DOT TRUST 86G

0200AN10775 | Reg # 19805406 | BD: Jan 25, 2019 | Frame: 6.1 | BW: 80 lbs | WW: 895 lbs | YW: 1425 lbs | Scrotal: 39.0 cm

CONNEALY EARNAN 076E
ELLINGSON ROUGHRIDER 4202
EA BLACKCLASS 8914

HOOVER NO DOUBT
PEAK DOT QUEEN 303D
QUEEN OF PEAK DOT 903W



Dam - PEAK DOT QUEEN 303D

Progeny a
Peak Dot Ranch -
PEAK DOT 38K



MID MAR. 2025	CE DIR %	CE DTRS %	GEST LENGTH (DAYS)	BIRTH WT (KG)	200 DAY WT (KG)	400 DAY WT (KG)	600 DAY WT (KG)	MAT COW WT (KG)	MAT. BODY CONDITION	MAT. COW HEIGHT	MILK KG	DAYS TO CALVING	SCROTAL SIZE
EBV	-1.7	-0.6	-1.1	+5.3	+63	+108	+130	+102	+0.37	+3.8	+14	-6.0	+3.1
ACC	67%	54%	84%	86%	85%	82%	82%	79%	63%	65%	73%	39%	77%
PERC	83	85	92	79	10	15	31	51	23	98	75	24	19

MID MAR. 2025	DOCILITY	CARCASS WEIGHT	EYE MUSCLE AREA	RIB FAT	RUMP FAT	RETAIL BEEF YIELD	IMF	NFI-F	CLAW SET	FOOT ANGLE	LEG ANGLE	ANGUS BREEDING INDEX	ANGUS BREEDING LOW FEED COST INDEX
EBV	+36	+76	+11.1	+1.1	+0.3	+0.9	+0.2	+0.19	+0.94	+0.70	+0.76	\$243	\$391
ACC	72%	71%	67%	68%	68%	59%	72%	58%	70%	70%	57%	-	-
PERC	8	29	9	26	40	20	94	46	70	5	3	15	23

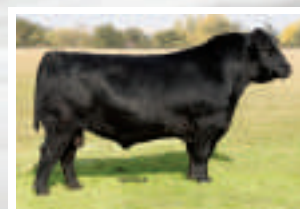
- Absolute standout acclaimed to be the most powerful sire ever produced in the Peak Dot Ranch program
- Big topped and square hipped with massive volume and muscle dimension combined with breed leading growth, Carcase Weight, EMA and Docility
- Powerful pedigree steeped in outstanding phenotype being an Ellingson Roughrider x Hoover No Doubt
- Dam ranks as one of the very best No Doubt daughters in the Peak Dot herd

MOGCK SPECIALIST 98

0200AN10760 | Reg # 19316692 | BD: Dec 23, 2017 | Frame: 5.8 | BW: 65 lbs | WW: 839 lbs | YW: 1372 lbs | Scrotal: 40.0 cm

EF COMMANDO 1366
BALDRIDGE 38 SPECIAL
BALDRIDGE ISABEL Y69

STYLES CASH R24
MOGCK RUTH 1686
MOGCK RUTH 264



Sire -
BALDRIDGE 38
SPECIAL

PGD - BALDRIDGE
ISABEL Y69



MID MAR. 2025	CE DIR %	CE DTRS %	GEST LENGTH (DAYS)	BIRTH WT (KG)	200 DAY WT (KG)	400 DAY WT (KG)	600 DAY WT (KG)	MAT COW WT (KG)	MAT. BODY CONDITION	MAT. COW HEIGHT	MILK KG	DAYS TO CALVING	SCROTAL SIZE
EBV	+6.1	+6.7	-5.0	+1.8	+64	+103	+128	+81	-0.11	+7.1	+20	-6.8	+1.1
ACC	75%	61%	95%	94%	90%	89%	90%	86%	70%	72%	81%	48%	87%
PERC	21	17	42	12	8	23	33	82	99	71	30	12	85

MID MAR. 2025	DOCILITY	CARCASS WEIGHT	EYE MUSCLE AREA	RIB FAT	RUMP FAT	RETAIL BEEF YIELD	IMF	NFI-F	CLAW SET	FOOT ANGLE	LEG ANGLE	ANGUS BREEDING INDEX	ANGUS BREEDING LOW FEED COST INDEX
EBV	+24	+80	+4.6	+0.4	-1.3	-0.2	+1.7	+0.03	+0.78	+0.84	+0.98	\$260	\$412
ACC	79%	81%	79%	79%	77%	71%	81%	64%	68%	68%	64%	-	-
PERC	39	21	73	41	68	79	67	29	37	22	36	6	11

- Mogck Specialist continues his dominance as a go to heifer option, without sacrificing growth and style
- Had another great run at the southern weaner sales in 2025, with progeny selling well in the front row pens!
- Specialist daughters are calving down now and they are doing a fantastic job!

ANGUS VOLUME PURCHASE PACKAGE

0200AN10840 PINE VIEW MOGUL G241

MOGUL

0200AN10468 PINE VIEW VEZINA J166

VEZINA

0200AN10804 LVVF TANKER 14

TANKER

50 DOSE+ PACKAGE

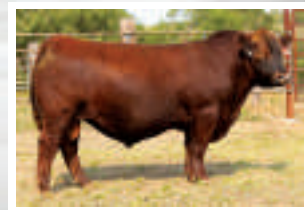
select any sire/sires in any combination from the above list

Not available with any other offer or whilst stocks last. Offer valid from 1st April 2025 to 31st December 2025.

NSFR SOVEREIGN L49

0200AR20730 | Reg # 4801980 | BD: Feb 22, 2023 | Frame: - | BW: 75 lbs | WW: 727 lbs | YW: 1308 lbs | Scrotal: 38.0 cm

LASO BUCKET LIST E8G BIEBER HARD DRIVE Y120
NIO AMERICAN FREEDOM 1005 NSFR BRANDY D245
NIO LAKOTA 9251 NSFR BRANDY U143



Sire - NIO
AMERICAN
FREEDOM 1005

MGS - BIEBER
HARD DRIVE Y120



RAAA-W25	CE	BW	WW	YW
EPD	16	-4.5	74	115
ACC	0.45	0.50	0.47	0.48
RANK %	15	10	19	26

RAAA-W25	MARB	CW	REA	FAT
EPD	0.97	16	-0.02	0.06
ACC	0.38	0.40	0.37	0.33
RANK %	1	77	79	98

RAAA-W25	ADG	DMI	MILK	ME
EPD	0.26	0.67	27	10
ACC	0.48	0.30	0.16	0.08
RANK %	40	42	35	84

RAAA-W25	HPG	CEN	STAY	YG
EPD	14	7	16	0.19
ACC	0	0.22	0.32	0.31
RANK %	18	47	27	95

- New Bull for 2025! Sovereign is a son of the powerful and impressive NIO American Freedom
- Sovereign offers calving ease with growth and marbling but does so in a pedigree that has stability!
- A bull that is sounds in structure and carries tonnes of rib shape, Sovereign is set to leave his mark over the coming years

RAML PAYLOAD 9500

0200AR20726 | Reg # 4186622 | BD: Jan 6, 2019 | Frame: 6.0 | BW: 80 lbs | WW: 691 lbs | YW: 1288 lbs | Scrotal: 42.0 cm

SLGN WIDELOAD 920W
PELTON WIDELOAD 78B
PELTON MISS JAYLA 0508S

HXC CONQUEST 4405P
RAML CHEROKEE MAIDEN 500
WDZ SRV FASHION 1135



PGD- PELTON
MISS JAYLA
0508S

PROGENY AT
PUGH FARMS



- Payload continues to make his mark here in Australia. With powerful made sons selling to strong demand and very attractive and productive daughters coming into production.
- Phenotypically Payload is a standout. Great feet and legs and carries ample muscle and shape.
- Has welded on the udders of his daughters, expect him to leave some great females to breed on with

MARCH 2025	CE DIR %	CE DTRS %	GEST LENGTH (DAYS)	BIRTH WT (KG)	200 DAY WT (KG)	400 DAY WT (KG)	600 DAY WT (KG)	MAT COW WT (KG)	MAT. BODY CONDITION	MAT. COW HEIGHT	MILK KG	DAYS TO CALVING	SCROTAL SIZE
EBV	-4.0	-	-1.9	+2.1	+37	+58	+78	+77	-	-	+12	-	+1.4
ACC	42%	-	65%	80%	71%	68%	64%	48%	-	-	48%	-	30%
PERC	85	-	20	25	10	10	5	10	-	-	30	-	5

MARCH 2025	DOCILITY	CARCASS WEIGHT	EYE MUSCLE AREA	RIB FAT	RUMP FAT	RETAIL BEEF YIELD	IMF	NFI-F	CLAW SET	FOOT ANGLE	LEG ANGLE
EBV	-	+52	+5.0	+0.2	-0.2	+1.4	+0.5	-	-	-	-
ACC	-	55%	47%	35%	31%	30%	33%	-	-	-	-
PERC	-	5	1	20	30	15	25	-	-	-	-

DAHLKE OUTCOME 016H

0200AR20727 | Reg # 4229282 | BD: Feb 28, 2020 | Frame: - | BW: 73 lbs | WW: 680 lbs | YW: 1315 lbs | Scrotal: 42.0 cm

COLLIER FINAL PRODUCT B389
COLLIER FINISHED PRODUCT
COLLIER AMY B385

ANDRAS FUSION R236
DAHLKE MS. SANDY 271C
DAHLKE TRENDY SANDI 127U



Sire - COLLIER
FINISHED
PRODUCT

MGS - ANDRAS
FUSION R236



- Outcomes first progeny have hit the ground, and have impressed!
- Darker in colour and very attractive, breeders with progeny are going back to him again to lock in the quality.
- Correct made, long bodied and easy fleshing make him a must for any Red Angus programs seeking to breed for the future

RAAA-W25	CE	BW	WW	YW
EPD	21	-7.5	59	102
ACC	0.59	0.68	0.61	0.62
RANK %	1	1	77	59

RAAA-W25	ADG	DMI	MILK	ME
EPD	0.27	1.31	22	5
ACC	0.62	0.34	0.23	0.17
RANK %	36	90	78	55

RAAA-W25	MARB	CW	REA	FAT
EPD	0.42	19	0.12	0.05
ACC	0.48	0.47	0.43	0.36
RANK %	50	63	48	91

RAAA-W25	HPG	CEN	STAY	YG
EPD	12	14	14	0.13
ACC	0.26	0.31	0.35	0.36
RANK %	43	1	56	73

RED SIX MILE MOSSY OAK 175H

0200AR20729 | Reg # 4547373 | BD: Feb 21, 2020 | Frame: - | BW: 70 lbs | WW: 888 lbs | YW: 1506 lbs | Scrotal: 36.5 cm

RED U-2 RECKONING 149A
RED SIX MILE JOHN WICK 882E
RED SIX MILE & CO GLORIA 29A

RED RUST BULL 31B
RED SIX MILE MISS LARK 225E
RED SIX MILE MISS LARK 300C



Sire- RED SIX MILE JOHN WICK 882E



DAM- RED SIX MILE LARK 225E

- Proven Calving ease option!
- Mossy Oaks pedigree reads as a who's who from the Six Mile program, combining John Wick and the Miss Lark 225E cow who are all class
- Progeny have been moderate, thick set and easy doing

MARCH 2025	CE DIR %	CE DTRS %	GEST LENGTH (DAYS)	BIRTH WT (KG)	200 DAY WT (KG)	400 DAY WT (KG)	600 DAY WT (KG)	MAT COW WT (KG)	MAT. BODY CONDITION	MAT. COW HEIGHT	MILK KG	DAYS TO CALVING	SCROTAL SIZE
EBV	-4.0	-	-1.9	+2.1	+37	+58	+78	+77	-	-	+12	-	+1.4
ACC	42%	-	65%	80%	71%	68%	64%	48%	-	-	48%	-	30%
PERC	45	-	5	60	1	1	5	5	-	-	30	-	90

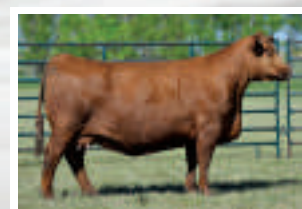
MARCH 2025	DOCILITY	CARCASS WEIGHT	EYE MUSCLE AREA	RIB FAT	RUMP FAT	RETAIL BEEF YIELD	IMF	NFI-F	CLAW SET	FOOT ANGLE	LEG ANGLE
EBV	-	+52	+5.0	+0.2	-0.2	+1.4	+0.5	-	-	-	-
ACC	-	55%	47%	35%	31%	30%	33%	-	-	-	-
PERC	-	5	15	50	60	35	80	-	-	-	-

EGL FURY 8100

0200AR20724 | Reg # 4048310 | BD: Jan 2, 2018 | Frame: 5.7 | BW: 82 lbs | WW: 713 lbs | YW: 1250 lbs | Scrotal: 38.0 cm

LSF TAKEOVER 9943W
LSF SRR TAKEOVER 5051C
LSF RR SYRINGA U8044 X0331

PIE GET WESTERN 4061
AHL DUCHESS 42W
AHL DUCHESS 106P



Dam - AHL DUCHESS 42W



Maternal Sibling

- Been a favorite here in Australia over the last few years and it's not hard to understand when you see his progeny!
- A powerful, full bodied individual with explosive muscle shape and massive capacity
- Sound structured with desirable foot shape and heel depth

MARCH 2025	CE DIR %	CE DTRS %	GEST LENGTH (DAYS)	BIRTH WT (KG)	200 DAY WT (KG)	400 DAY WT (KG)	600 DAY WT (KG)	MAT COW WT (KG)	MAT. BODY CONDITION	MAT. COW HEIGHT	MILK KG	DAYS TO CALVING	SCROTAL SIZE
EBV	-1.2	-2.7	-1.1	+1.8	+32	+45	+54	+55	-	-	+12	-	-
ACC	49%	32%	72%	86%	76%	69%	71%	53%	-	-	53%	-	-
PERC	65	-	55	20	40	60	70	70	-	-	30	-	-

MARCH 2025	DOCILITY	CARCASS WEIGHT	EYE MUSCLE AREA	RIB FAT	RUMP FAT	RETAIL BEEF YIELD	IMF	NFI-F	CLAW SET	FOOT ANGLE	LEG ANGLE
EBV	-	+36	+2.9	-0.2	-0.6	+1.2	0.0	-	-	-	-
ACC	-	57%	45%	49%	47%	43%	43%	-	-	-	-
PERC	-	60	10	40	55	25	75	-	-	-	-






ANGUS	MONTANA ELEVATION 7108.....	7
	QUAKER HILL HIGH COTTON 9U17	6
	PINE VIEW MOGUL G241	4
	QUAKER HILL REGENERON 0U35.....	6
	MOGCK SPECIALIST 98	8
	LVVF TANKER 14	5
	KOOJAN HILLS TRADESMAN T306	5
	PEAK DOT TRUST 86G	8
	RIVERBEND UPGRADE 8605.....	7
	PINE VIEW VEZINA J166	3

RED ANGUS	EGL FURY 8100	11
	SIX MILE MOSSY OAK 175H	11
	DAHLKE OUTCOME 016H	10
	RAML PAYLOAD 9500	10
	NSFR SOVEREIGN L49	9



Genetics for Life®

Office & Warehouse: 2 Station Street, Maddingley Vic 3340 | Postal: P O Box 748, Bacchus Marsh Vic 3340
Phone: 03 4367 7841 • E: semex@semex.com.au • W: www.semex.com.au   

Tyson Shea

General Manager

Mobile: 0431 303 853

Phone: (03) 4367 7841

tysonshea@semex.com.au

Joseph Holloway

*National Key Accounts
& Solutions Manager*

Mobile: 0400 950 046

joseph.holloway@semex.com.au

Alexandra Mathews

Solutions Coordinator

Mobile: 0428 819 551

amathews@semex.com.au

AREA MANAGERS

Vaughn Johnston

Mobile: 0408 304 526

National Sales Manager, Area Manager South Australia & Western Australia
vaughnjohnston@semex.com.au

Peter Dickson

Mobile: 0428 539 040

Area Manager Western Victoria, SE South Australia & Tasmania
peter.dickson@semex.com.au

Mitchell Clark

Mobile: 0459 335 752

Area Manager Gippsland
mclark@semex.com.au

Hayden Williamson

Mobile: 0439 150 646

Area Manager Northern Victoria & Southern NSW
hwilliamson@semex.com.au

David Ninness

Mobile: 0427 305 269

Area Manager South Coast, Far South Coast, Hunter, New England & Central West NSW
davidninness@semex.com.au

Karen Polson

Mobile: 0428 535 183

Area Manager Northern NSW & Queensland South East & Far North Qld
Karen_Yarnold@semex.com.au

Available while stocks last. All prices quoted are Recommended Retail Price excluding GST. Prices subject to change without notice.

Limitation of Liability: The information contained herein is from sources we believe to be reliable, nevertheless Semex Pty Ltd gives no warranty and makes no representation as to the accuracy of such information. Any person relying upon any information set out herein does so entirely at their own risk and shall not have any claim against Semex Pty Ltd for any loss or damage which they thereby sustain.