



VIKING GENETICS

innovative breeding



\$26
+GST

VH Ascari

VH ALBERTA X VH POGBA P



Daughter of VH Ascari

RRP \$28

- Consistently top ranked Daughter proven BPI sire
- Farmer favourite with excellent fertility and mastitis resistance
- Complete package production, calving ease, longevity

Dam average (305 days)

12,775 litres 4.0% F / 496 KgF 3.57% P / 443 KgP

Nasis ID: 89FFS13
Bull ID: VIKHASCARI
A2A2

ABV - APRIL 2026

BPI	HWI	SI
627	661	761

ABV PRODUCTION TRAITS REL 98%

ASI	KgP	P%	Milk	KgF	F%
240	26	0.26	429	13	-0.07

ABV HEALTH TRAITS

Cell count	Survival	Dtr Fertility	Calving ease
126	106	114	102

WORKABILITY REL 93%

Milking speed	Temperament	Likeability
102	102	104

VJ Hamlet

VJ HUUS X VJ HICKEY



Daughter of VJ Hamlet

RRP \$20

- Outstanding daughter proven health profile
- Highly fertile daughters with lasting productivity
- Balanced udders with reliable teat alignment

Dam average (305 days)

9,152 litres 6.24 % / 555 kgF 4.53 % / 402 kgP

Nasis ID: 89JJP15
Bull ID: VIKJHAMLET
A2A2

ABV - APRIL 2026

BPI	HWI	SI
450	464	520

ABV PRODUCTION TRAITS REL 88%

ASI	KgP	P%	Milk	KgF	F%
122	11	0.19	60	8	0.08

ABV HEALTH TRAITS

Cell count	Survival	Dtr Fertility	Hoof Health(NTM)
128	105	110	115

WORKABILITY REL 73%

Milking speed	Temperament	Likeability
100	101	100



\$22
+GST



Nationwide AB

John Pickford 0428 529 413
Don Perry 0415 905 811
Mel 0400 857 784
Office 03 5592 5217

VikingGenetics

Darren Moloney 0419 727 649
damol@vikinggenetics.com

Office 02 6024 5972



VIKING GENETICS
innovative breeding



VIKINGGENETICS

innovative breeding

VH Klim

VH KALIF X SEMINO



Nasis ID: 89FFT10
Bull ID: VIKHKLIM
A2A2

RRP \$28

- A true solution for many common conformation faults
- High type in all categories, proven % lifter +.65%P, +46%F
- Strong udders, great teat length and placement

Dam average (305 days)

11,870 litres 4.05% F / 467 KgF 3.81% P / 439 KgP

ABV - APRIL 2026

BPI	HWI	SI
656	455	892

ABV PRODUCTION TRAITS REL 91%

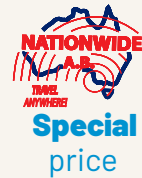
ASI	KgP	P%	Milk	KgF	F%
409	31	0.65	-127	27	0.46

ABV HEALTH TRAITS

Cell count	Survival	Dtr Fertility	Calving ease
141	103	100	101

WORKABILITY REL 72%

Milking speed	Temperament	Likeability
99	102	102



\$24
+GST

VH Gipsy

GARFIELD X VH RAGGAT



Nasis ID: 89FFU13
Bull ID: VIKHGIPSY
A2A2

RRP \$24

- Strong production with quality udders and excellent rear support, corrects reverse tilt in udders
- Wide rumps, balanced body capacity for efficient feed conversion
- Good health profile for reliable daughters built to last

Dam average (305 days)

13,675 litres 4.5% F / 598 KgF 3.98% P / 528 KgP

ABV - APRIL 2026

BPI	HWI	SI
703	573	902

ABV PRODUCTION TRAITS REL 79%

ASI	KgP	P%	Milk	KgF	F%
359	22	0.37	108	34	0.42

ABV HEALTH TRAITS

Cell count	Survival	Dtr Fertility	Calving ease
142	108	104	101

WORKABILITY REL 67%

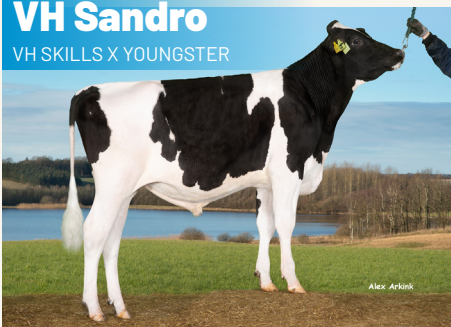
Milking speed	Temperament	Likeability
100	100	102



\$22
+GST

VH Sandro

VH SKILLS X YOUNGSTER



Nasis ID: 87FFW07
Bull ID: VIKHSANDRO
A1A2

RRP \$28

- Sort after combination of high yeild, elite fertility & udder health
- Strength conformation with wide sloping rumps
- Strong udder attachments, balanced teat placements

NTM PRODUCTION

Milk L	Fat kg	Fat, %	Protein kg	Protein %
743	37	0.08	26	0.01

Daughter fertility	Udder Health	Milking speed
119	105	112

Est. daughter average (305 days)

12,797 litres 4.25% F / 520 KgF 3.56% P / 439 KgP

NTM 39

BPI 382 HWI 274 SI 461 ASI 211

NTM CONFORMATION

		90	100	110	120	130		
Stature	Shorter						Taller	102
Rib structure	Stronger						Angular	99
Chest width	Narrower						Wider	106
Body depth	Shallower						Deeper	110
Rump width	Narrower						Wider	121
Rump angle	Higher pins						Lower pins	104
Fore udder attachment	Looser						Stronger	112
Rear udder height	Lower						Higher	103
Rear udder width	Narrower						Wider	115
Suspensory ligament	Softer						Stronger	104
Teat placement front	Wider						Closer	99
Teat placement rear	Wider						Closer	100



\$24
+GST